

GARMIN®

ИНСТРУКЦИИ ЗА ИНСТАЛИРАНЕ НА LIVESCOPE™ PLUS LVS34

Важна информация за безопасност

WARNING

Important Safety u Product Information

ВНИМАНИЕ

Garmin

support.garmin.com

Актуализация на софтуера

support.garmin.com.

Видеоклипове за инсталиране

garmin.com/videos/lvs34

QR



Необходими инструменти

-
- GLS™ 10,
- 8
- ()



Торбични за части

A	
B	
C	barrel mount
D	barrel mount
E	
F	

Съображения за монтаж

•

• Barrel Mount

•

•

•

knobs

•

knobs

•

•

•

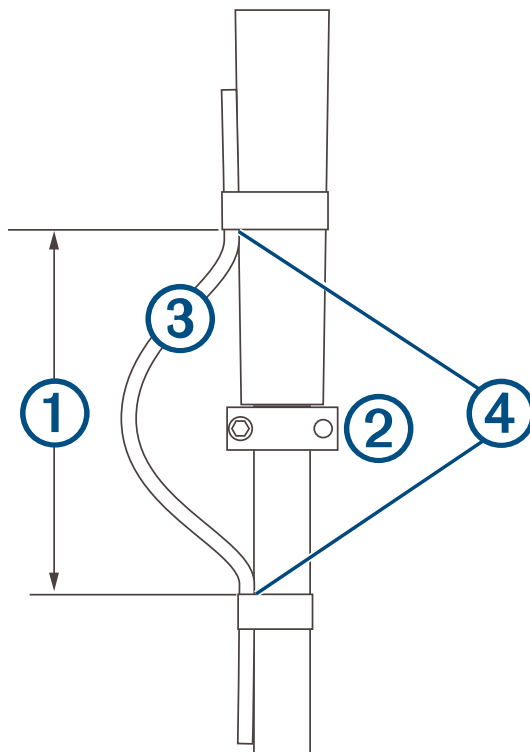
Съображения за кабели

ЗАБЕЛЕЖКА

- 25 (10)

Прокарване на кабела на трансдюсера

1 ③ 10 10 ① ② 25 (10)
20 (8)

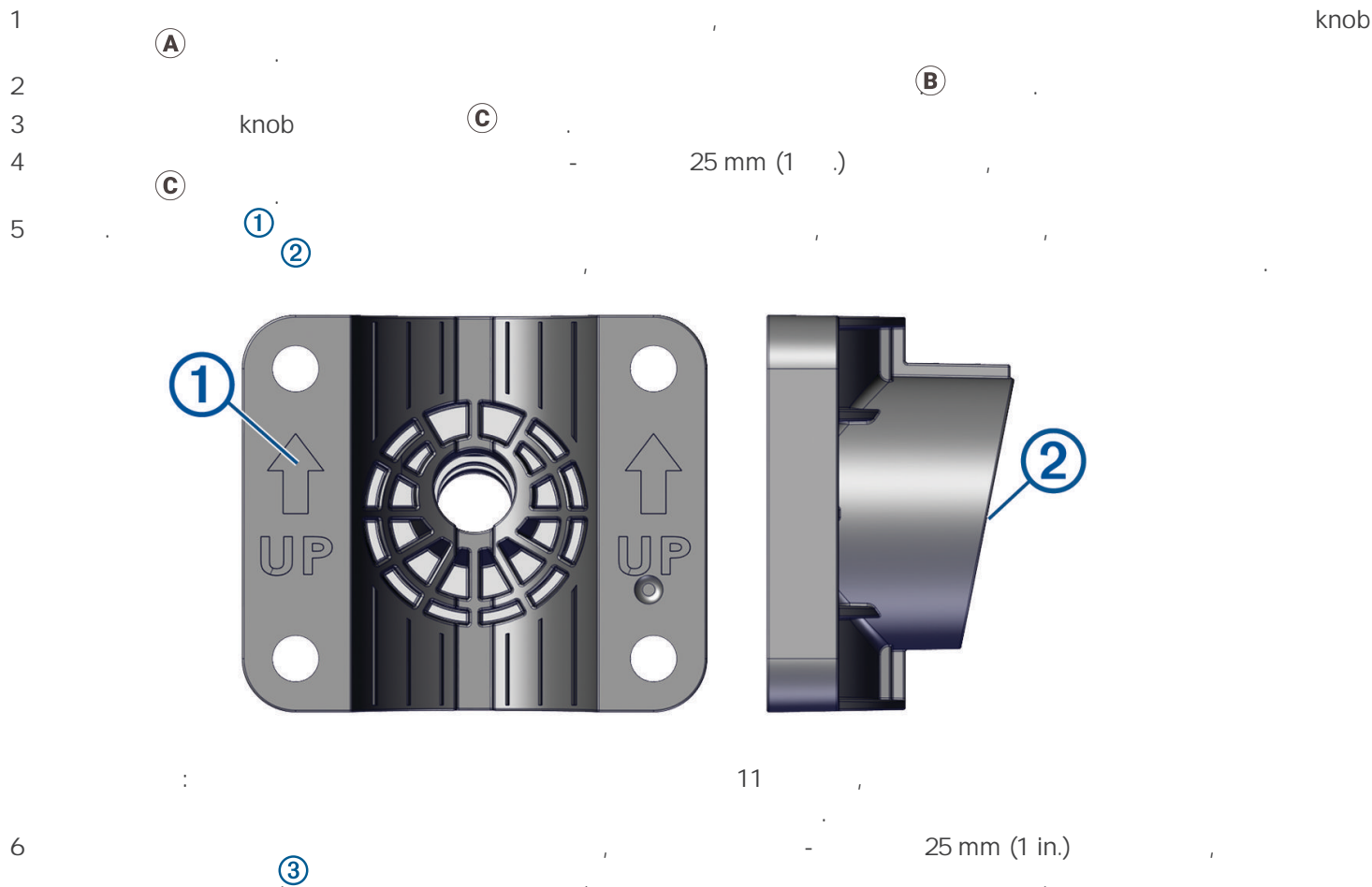


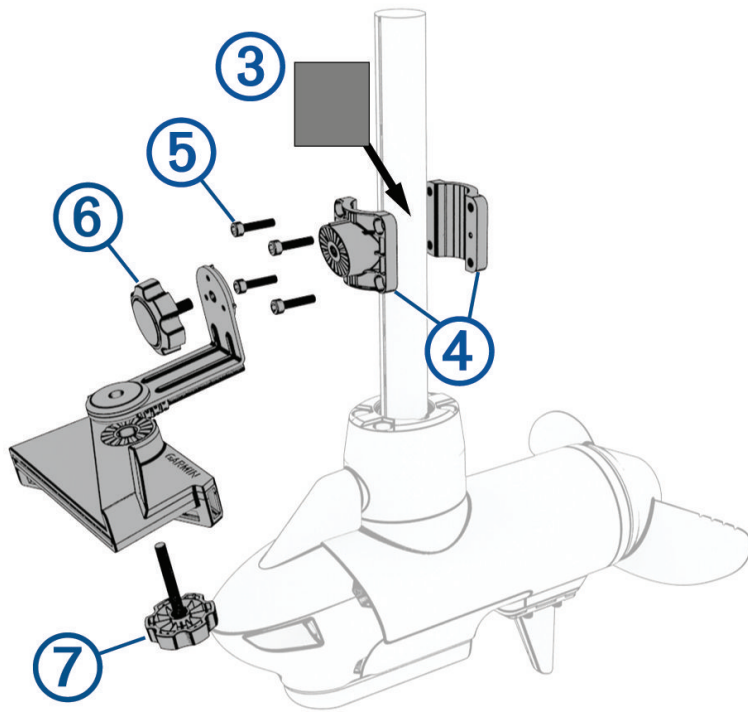
2 ④
3

Инсталиране на сондата върху стойката за режим на перспектива

A B C

ЗАБЕЛЕЖКА





7

④ 25 mm (1 in.).

8

M5 ⑤

9 ()

10 90

⑥

11

⑦

12

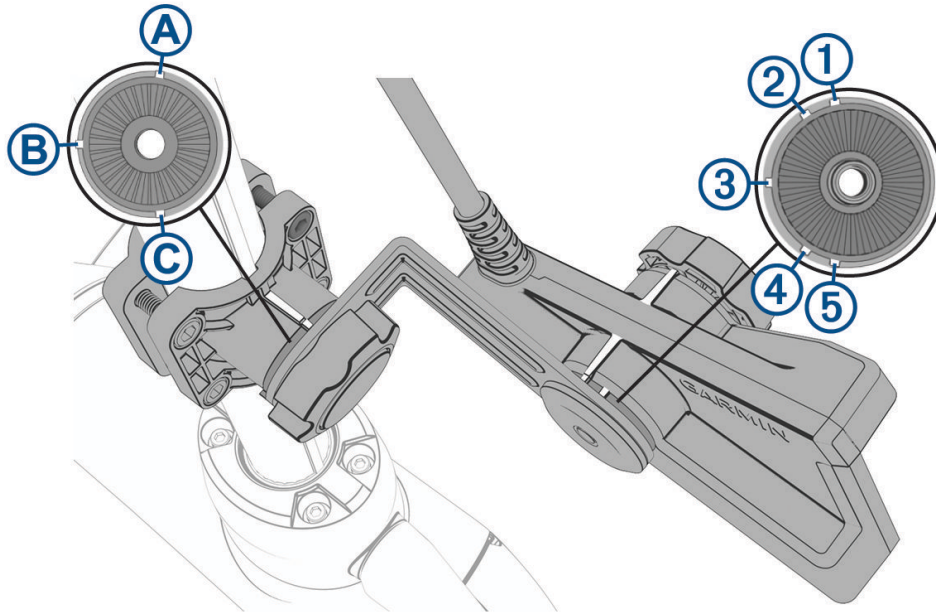
13

buy.garmin.com

Garmin.

14

Режими на изглед



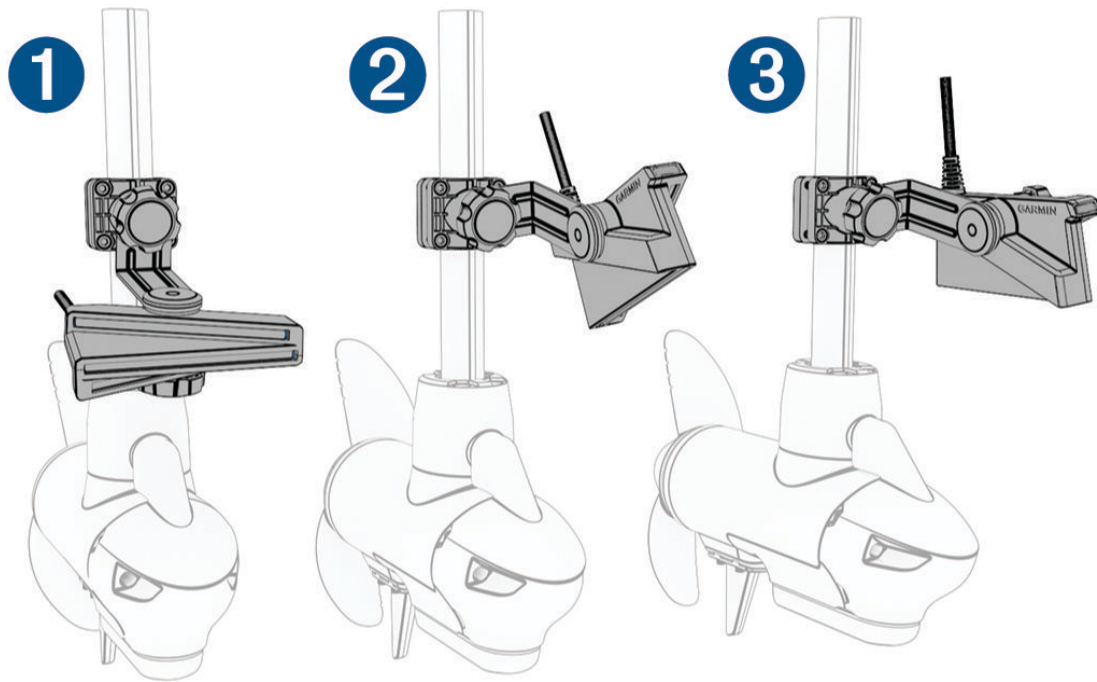
A and 1

A and 2

B and 3

C and 4

C and 5



Примери за режим на изглед от страната на порта

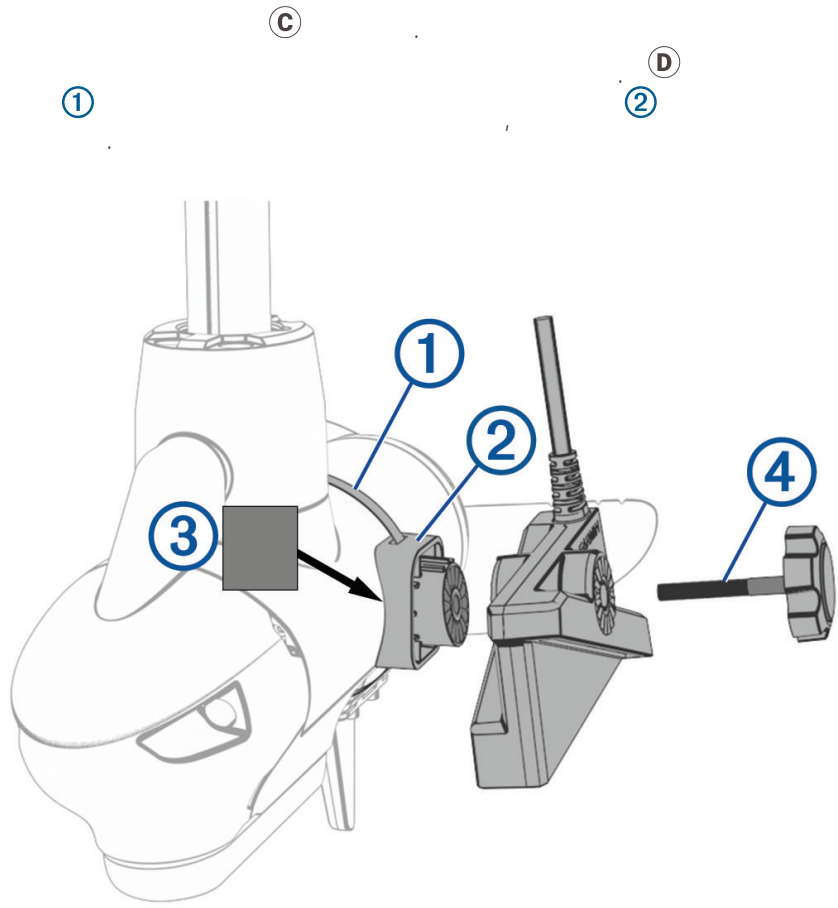
1	(C 3)
2	(A 2)
3	(A 1)

Инсталиране на сондата на Trolling Motor Barrel

C **D**

ЗАБЕЛЕЖКА

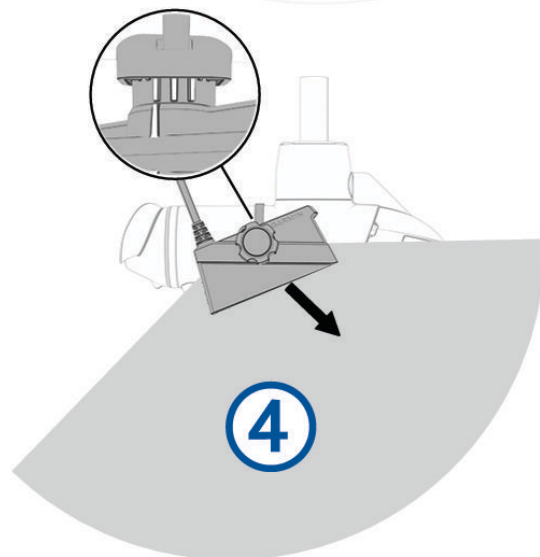
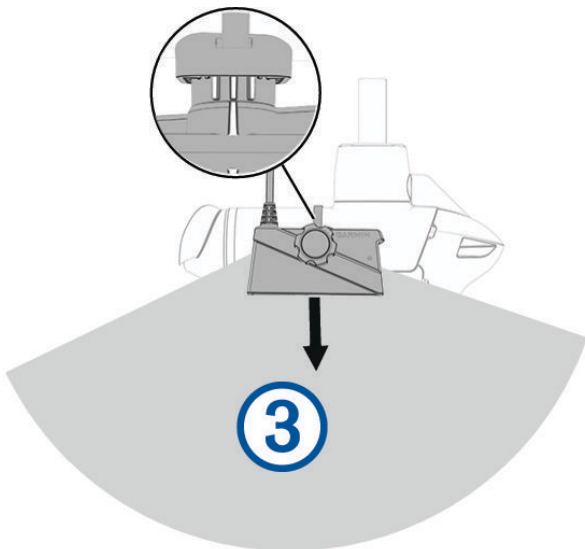
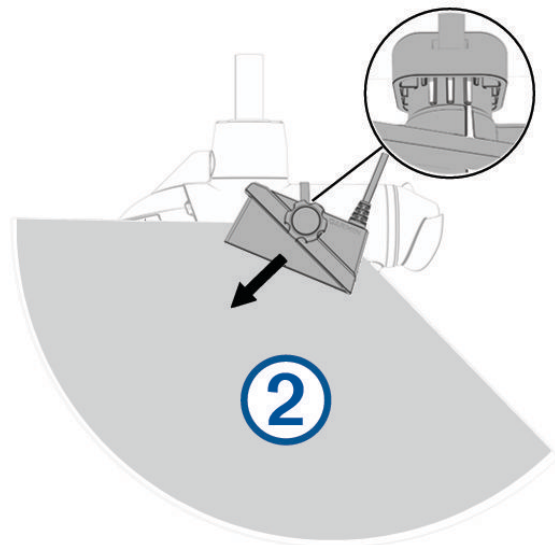
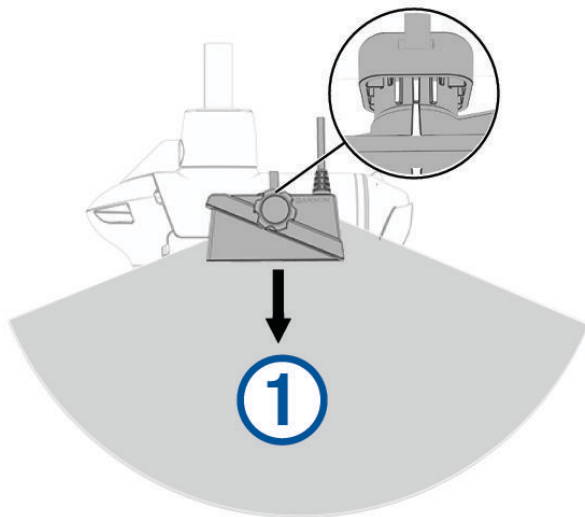
1
2
3



4
5
6
7

8
9

Trolling Motor Barrel Mount Ориентация

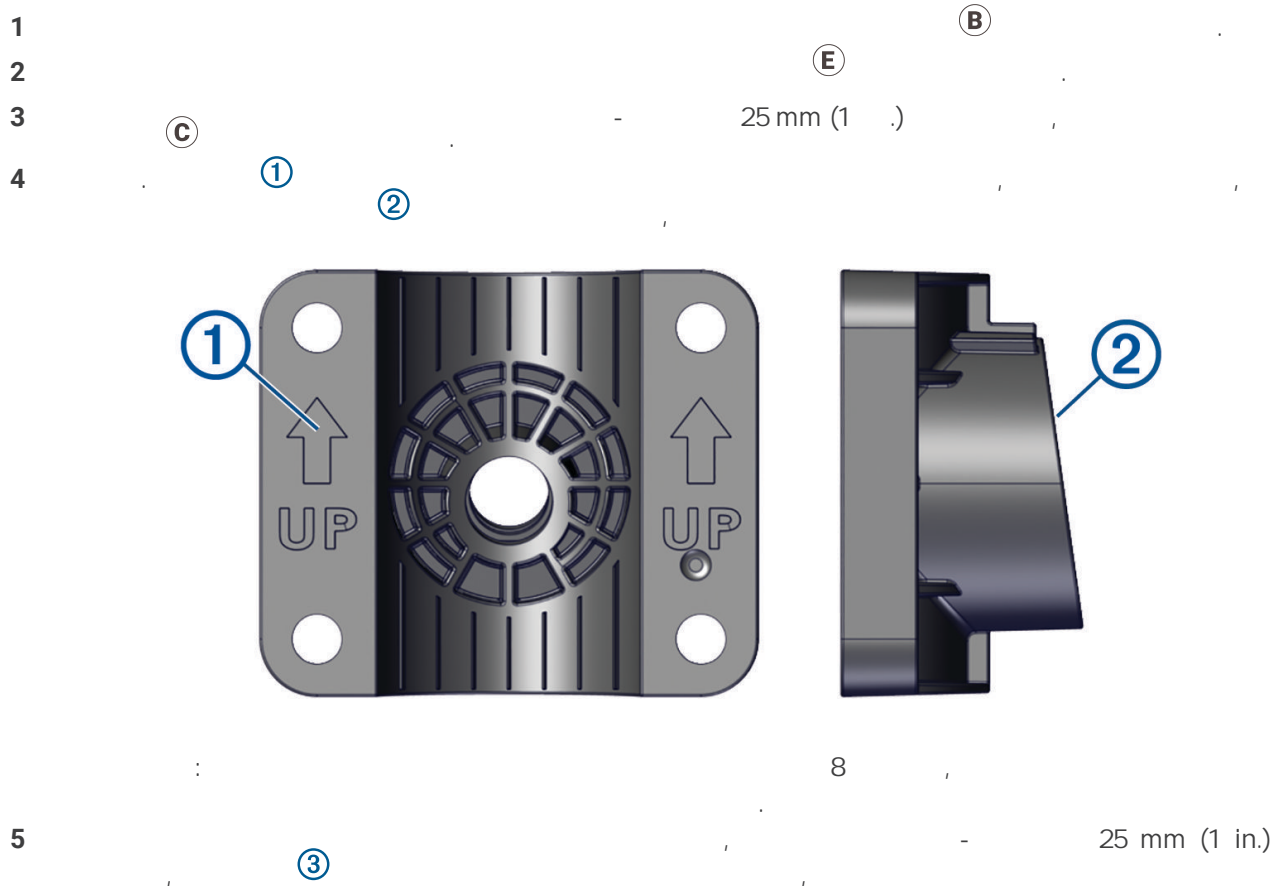


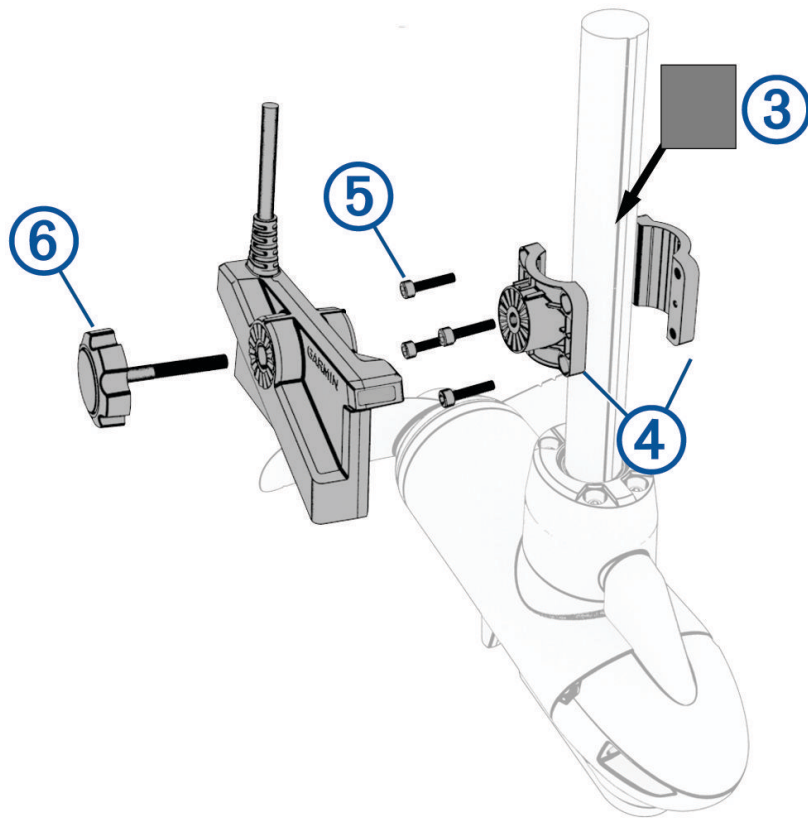
①	Port side, downward view
②	Port side, forward view
③	Starboard side, downward view
④	Starboard side, forward view

Инсталиране на сондата на оста на тролинг мотора

B C E

NOTICE





25 mm (1 in.).

6

7

8 ()

9

10

11

12

.

.

.

buy.garmin.com

Garmin.

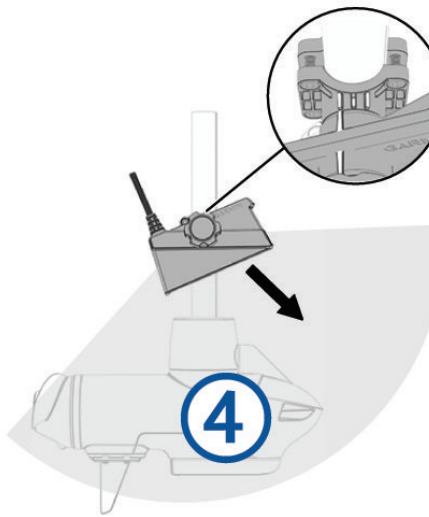
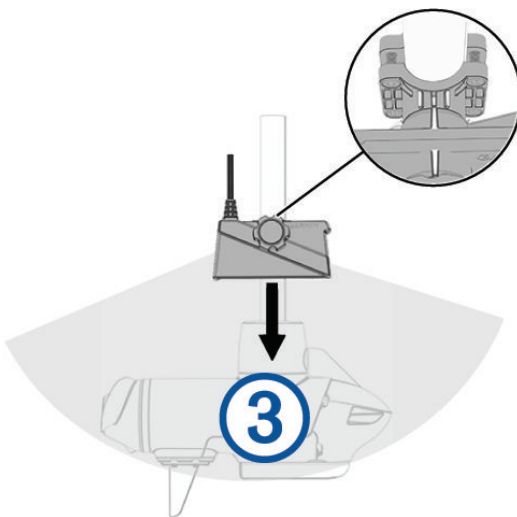
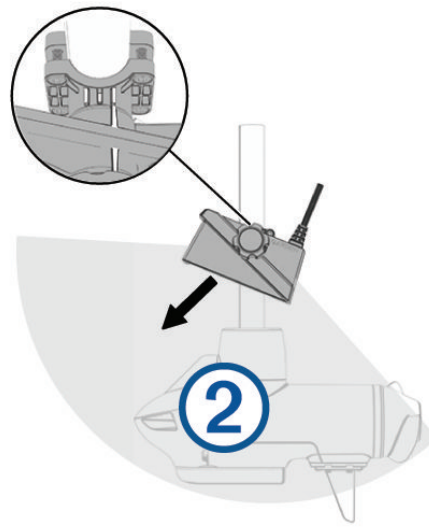
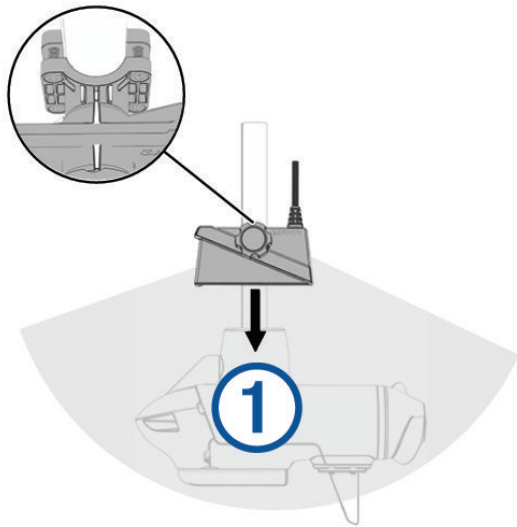
13

Ⓒ

Ⓒ

Ⓒ

Ориентация на оста на тролинг двигателя



①	Port side, downward view
②	Port side, forward view
③	Starboard side, downward view
④	Starboard side, forward view

Инсталиране на сондата на стъбло

()

8

Garmin

buy.garmin.com



ЗАБЕЛЕЖКА

1

(B)

2

(E)

3

-

25 mm (1 in.)

(C)

4

-

25 mm (1)

5

6

(C)

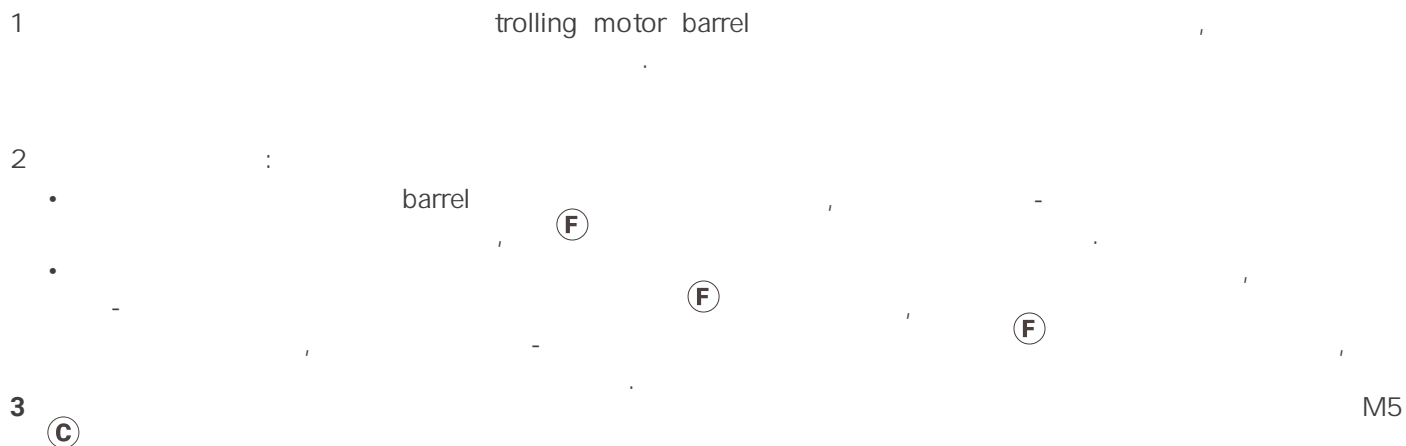
7

(C)

8

9

Инсталиране на сондата с помощта на хардуер за монтиране с нисък профил

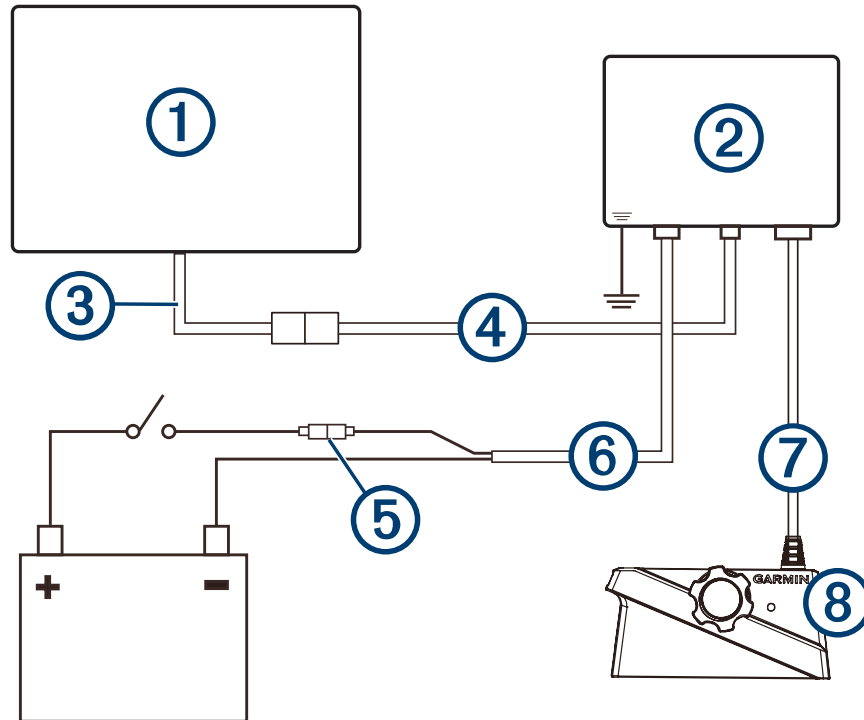


Монтиране на GLS 10 Black Box

ЗАБЕЛЕЖКА

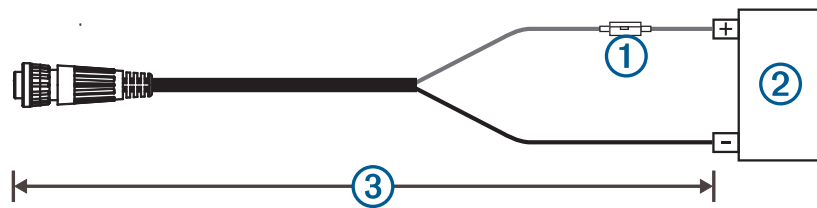
- 1
- 2
- 3
- 4
- 5
- 6

Инсталационна схема

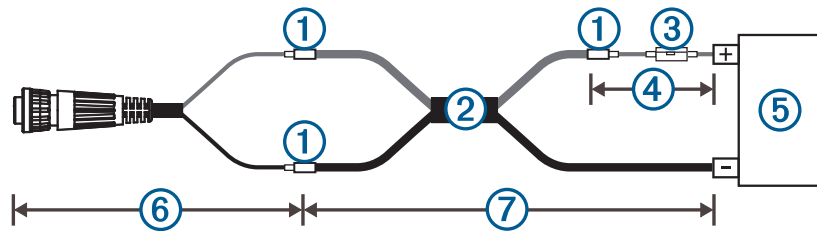


①	Garmin ¹
②	LiveScope GLS 10
③	Garmin (Garmin 010-12531-01)
④	Garmin Marine Network NETWORK
⏏	Water ground
⑤	7,5 A, ЗАБЕЛЕЖКА
⑥	LiveScope GLS 10 POWER
⑦	XDCR
⑧	LiveScope Plus LVS34

Захранващи кабелни удължители



Елемент	Описание
①	
②	
③	9 (2,7)



Item	Description
①	
②	<ul style="list-style-type: none"> • 10 AWG (5,26 mm²) , 4,6 m (15 ft.) • 8 AWG (8,36 mm²) , 7 m (23 ft.) • 6 AWG (13,29 mm²) , 11 (36)
③	
④	8 (20,3)
⑤	
⑥	8 (20,3)
⑦	36 (11)

Мигащи кодове

LED Color	State	Status
/		
	3-	
	3-	
	3-	

Настройки и работа на сондата

Конфигуриране на режим на изглед

- 1 : **Sonar > LiveScope > Options > Sonar Setup > Installation > Orientation.**
- 2 : Auto

Калибриране на компаса

- 1 : **Options > Sonar Setup > Installation.**
- 2 : Use AHRS, AHRS.
- 3 : **Calibrate Compass.**
- 4 : SteadyCast™, 1,5

Спецификации

LiveScope Plus LVS34 Спецификации

(x x)	161,7 x 77,5 x 47,8 mm (6,37 x 3,05 x 1,88)
()	1018 g (2,25 lb.)
	530 1 100 kHz
	0° 104°
	-40 85°C
1	
/	61 (200) : 135 : 20

Спецификации на сонарния модул LiveScope GLS 10

(x x)	245 x 149 x 65 mm (9,7 x 5,9 x 2,6)
	1,96 kg (4,33 lbs.)
	-15 70°C (5 158°F)
	-40 85°C (-40 185°F)
	10 32 Vdc
	21 W , 24 mW , 58 W .
	178 mm (7)

Лиценз за софтуер с отворен код Garmin Marine Network

developer.garmin.com/open-source/linux/.

Почистване на сондата

1

2

© 2022 Garmin Ltd. or its subsidiaries

Garmin® and the Garmin logo are trademarks of Garmin Ltd. or its subsidiaries, registered in the USA and other countries. LiveScope™ and GLS™ are trademarks of Garmin Ltd. or its subsidiaries. These trademarks may not be used without the express permission of Garmin.

M/N: A04391

Garmin Corporation